



# Skylight for Conservation Release Notes

## January 2021

---

*Next generation insights for marine protection.*

### Summary

Identify Vessels with Gaps in their AIS Transmission.....	2
View Bathymetry Layer.....	3
Email Alerts for Entries.....	4

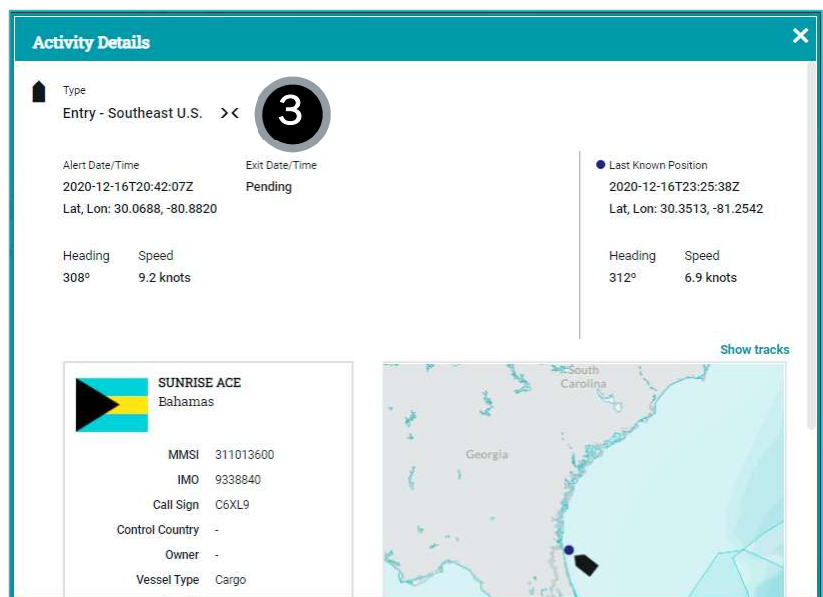
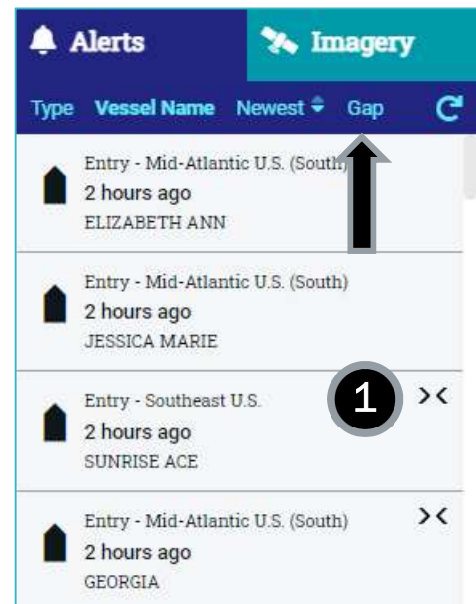
## Identify Vessels with Gaps in their AIS Transmission

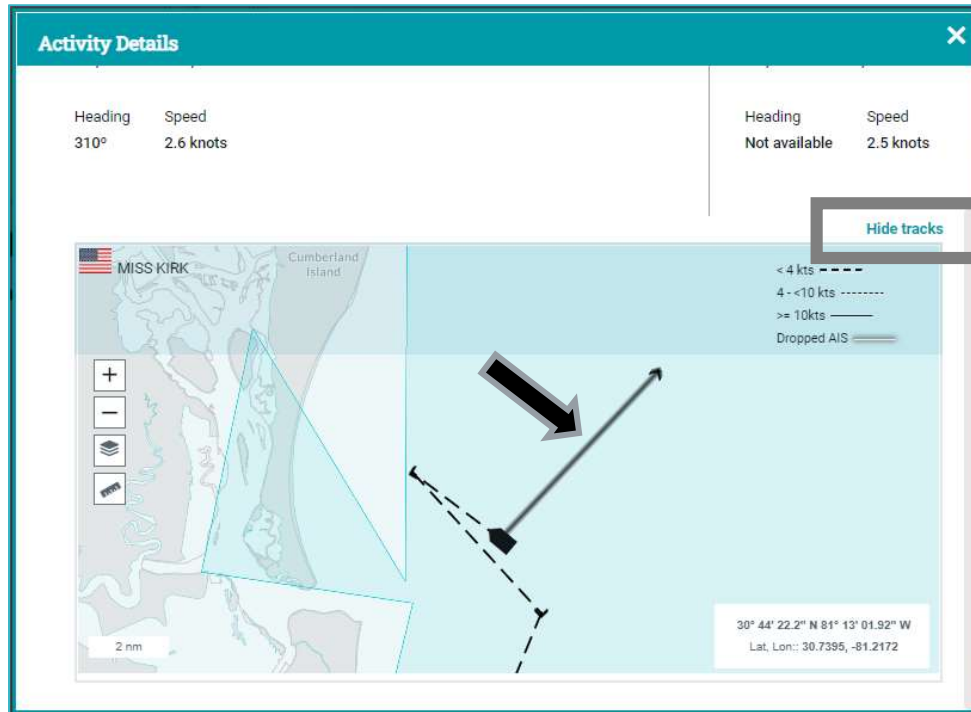
AIS is required to be fitted on all vessels of 300 gross tonnage or upwards on international voyages, cargo ships of 500 gross tonnage and upwards not engaged in international voyages, and all passenger ships irrespective of size. In many areas for other vessel types, AIS is not required to be on but it is still suspicious for vessels to be switching the transmission off and on.

To help surface these vessels, Skylight has added an indicator to all Entry events where there was a 2-hour gap in AIS transmission during the event window (48 hours before the event and/or 48 hours after the event). By looking for this indicator (><), you can quickly identify Entry events with gap(s) in their tracks without needing to open the event details one-by-one.

The indicator (><) appears in three places:

1. The right-hand panel
  - Here, you can also sort events by whether they had a gap in transmission.
2. Hover-over a vessel on the map
3. Event Details Card
  - Here, you can also see the gap in the “Tracks View” demarcated by a gray line(s).





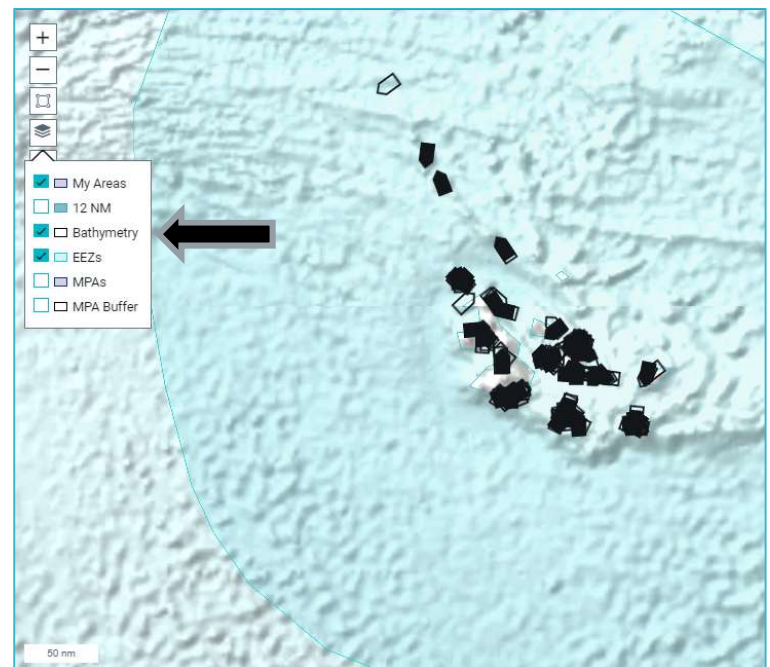
**NOTE:** On occasion, you may see a transmission gap in the Tracks view without the corresponding indicator. This occurs because there is a delay to the icon display that is longer than updates to the Tracks view.

### View Bathymetry Layer

Skylight now has a map layer that displays the depth of the water to help analyze vessel behavior. For example:

- A fishing vessel will travel slowly along a depth line when it is trawling
- Large vessels may travel around shallow waters to avoid underwater hazards

You can enable this layer by clicking the map layer icon and selecting “Bathymetry”.



## Email Alerts for Entries

Saved Filters created on the Entry Map with 'All Assigned Areas' chosen will generate emails for entries into all MPAs (assigned to your account) and all Custom areas you have created and enabled for monitoring vessel entries.

**Save view as:**

Everything

---

**Area:** All Assigned Areas

**Nationalities:** All  
**Vessel Types:** All  
**Entry:** All  
**Speed:** 0 - 60+ Knots  
 Past 24 Hours

Receive Email Alerts

**My Filters / Email alerts (18)**

 **Everything**

**Nationalities:** All  
**Vessel Types:** All  
**Entry:** All  
**Speed:** 0 - 60+ Knots  
**Area:** All Assigned Areas  
 Past 24 Hours

If you want to limit the emails to specific areas, make sure that area is selected prior to clicking 'Saved View'. If you have selected the area properly, its name appears in the 'Area' field. For example:

**Save view as:**

e.g. activities in search area

---

**Area:** Bazaruto Park Borders

**Nationalities:** All  
**Vessel Types:** All  
**Entry:** All  
**Speed:** 0 - 60+ Knots  
 Past 24 Hours

Receive Email Alerts